

NetForce

for Data Acquisition

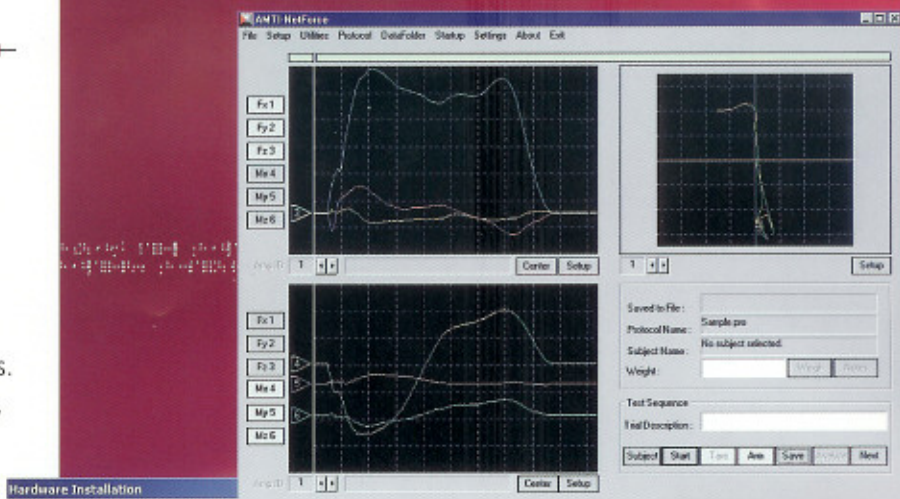
AMTI's NetForce software is a complete data acquisition solution ideally suited to gather data from AMTI's multi-axis force platforms and multi-axis transducers.

NetForce can be setup to take data from a variety of AMTI's signal conditioning products. NetForce provides an Ethernet data interface, a RS-232 serial data interface, and also analog interfaces with Data Translation's DT3002 data acquisition cards

- Ideal for gait and balance acquisition
- Excellent for general purpose multi-axis transducer acquisition
- Exports data to BioAnalysis for gait and balance analysis, or as comma-delimited text for spread sheet or other custom analysis.
- Interfaces with DigiAmp, MiniAmp, AccuGait, or AccuSwayPLUS
- Supports up to 30 channels of analog data acquisition
- Continuous simultaneous real time display of up to 12 data channels and COP
- Extensive trial and subject information database
- Flexible acquisition capabilities
- Trigger options include channel level, key stroke, elapsed time, Ethernet connection, or external input
- English and metric units supported
- Simple hardware setup

Specifications

Processor 400 MHz
Memory 128M RAM
Operating Systems . . Windows 98/Me/2000/XP
Hard Drive 20 MB



Hardware Installation

Current Installation

Installation Type:	Platform	Model	SN#
MiniAmp Analog	1.	DR6-7-1000	1234
Modification Date: Wednesday, January 28, 2004	2.	DR6-6-1000	2345
Installed Platforms: 4	3.	MC3A-6-250	M3456
	4.	MC5-6-5000	M5678
	5.		
	6.		

New Installation

<input type="button" value="DigiAmp E-net"/>	<input type="button" value="MiniAmp Serial"/>	<input type="button" value="AccuGait"/>	<input type="button" value="Restore"/>
<input type="button" value="DT3002"/>	<input type="button" value="MiniAmp Analog"/>	<input type="button" value="AccuSway"/>	<input type="button" value="Done"/>

Subject Management: C:\AMTINetForce\

Subject selected for testing: Subject: Smith, Joe Protocol: Sample.pro

Trial selected for viewing: Trial: Type:Running Gait Date File: Trial00003

Last Name	First Name	Middle Name	Protocol	Trial Description	ID Number	Exam Date	Conditions	Trial Date
Smith	Joe		Sample.pro	Type:Running Gait		09/26/2003		
			Sample.pro	Type:Running Gait		09/26/2003		
			Sample.pro	Type:Running Gait		09/26/2003		
			Sample.pro	Type:Running Gait		09/26/2003		
Smith	test		Sample.pro	Type:Running Gait		10/11/2003		
			Sample.pro	Type:Running Gait		01/28/2004		
			Sample.pro	Type:Running Gait		01/28/2004		
Dee	Jane		Sample.pro	Type:Running Gait		10/22/2003		
			Sample.pro	Type:Running Gait		01/28/2004		
Dee	Jane		Standard.pro	Type:Running Gait		01/28/2004		
			Standard.pro	Type:Running Gait		01/28/2004		

Buttons: Add Record, Edit Record, Copy Record, Delete Record, Import Record, Data Folder, Query, Show All, Select, Cancel



AMTI, 176 Waltham Street, Watertown, MA 02472-4800 | 1-800-422-AMTI
Tel: 617-926-6700 | Fax: 617-926-5045 | www.amtiweb.com | sales@amti.com